

Need inspiration?
Having a creative block?
Maybe all you need is a
trip to the desert.

Let your spirit run free where the warm desert air will brush your cheek under the sun or blanket of stars. Get away from it all and let the music muse whisper in your ear at this “audio oasis” in Mesa, Arizona called **The Saltmine**. If Jim Morrison lived long enough to see this desert studio dream vision, he would of recorded at **The Saltmine**.

The **Saltmine Studio Oasis** is a dream come true for those seeking a unique recording experience. This complex has five separate recording facilities that has everything from a 50-channel vintage Neve tracking room (Studio A) to a classic SSL 6064 E/G+ (Studio B). Also available is an abundance of tracking and mixing gear and

Recording

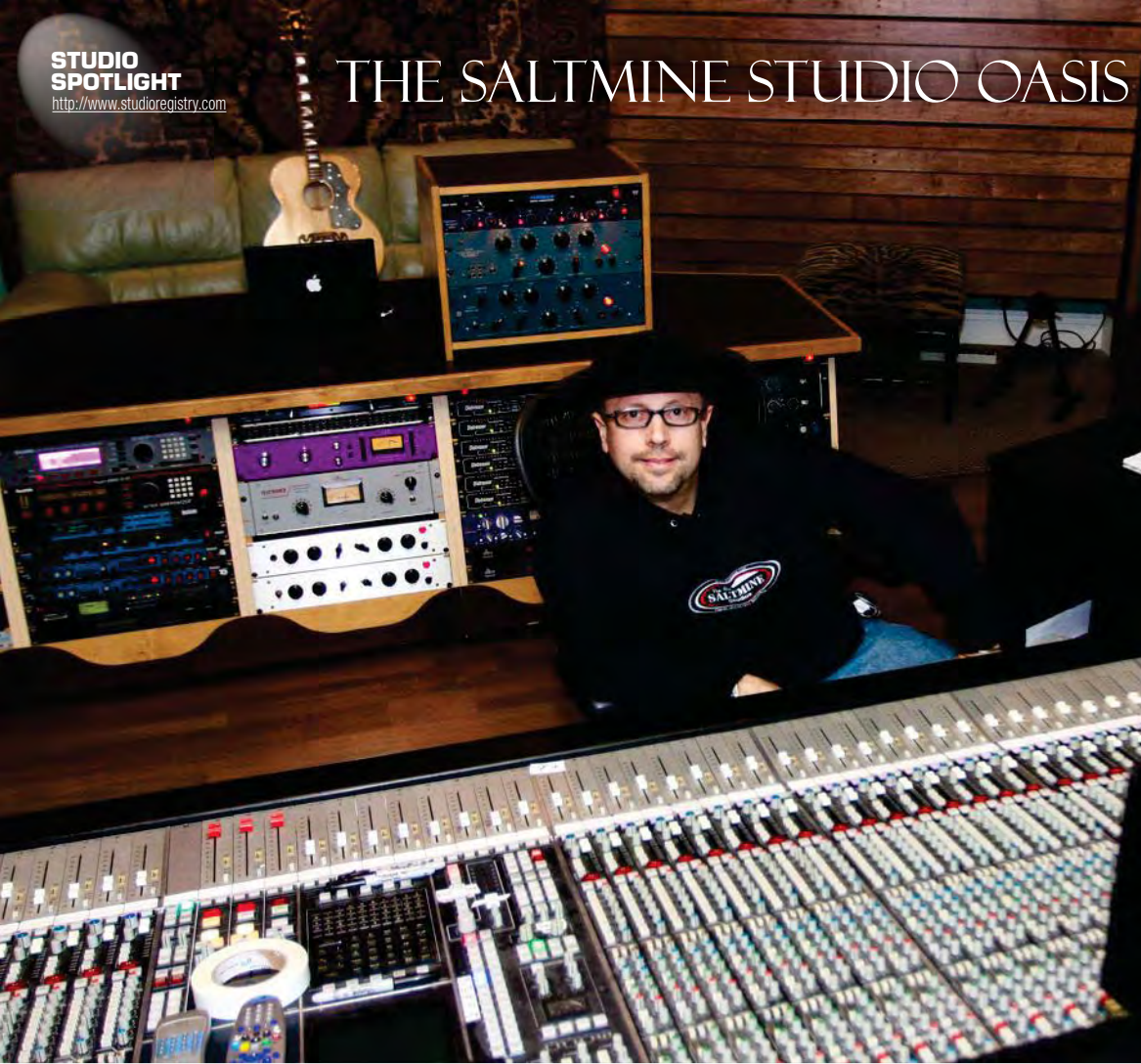
MOJO

Magic in
the heart of
the Phoenix
desert:

**The
Saltmine
Studio
Oasis**



THE SALTMINE STUDIO OASIS



Studio A

Vintage Discrete 48 Channel Neve Tracking Studio (1081 type pre/EQ) with Pro-Tools HD-3 (32 x 32 ins and outs) Waves Platinum, 5 Iso Rooms, a huge selection of Mics, a Cathedral Drum Room with Grand Piano, Fender Rhodes, and DW 6-piece drum set.

NEVE 6235 CONSOLE

- Custom Built for Holland National Television in 1979 to Neve's broadcast spec.
- 36 inputs featuring 33114 input modules (1081 pre's)
- 3-band EQ and high/low pass filters.
- 16 monitor inputs, 4 Aux inputs, 8 subgroup outputs.
- Eight 33314a compressor/limiters
- Analog VU metering on 36 channels and plasma PPM metering on 8 busses and 8 monitor inputs.
- Featuring dual Dorrough Digital VU/PPM meters and DOD RTA's on 2-Track output or other selectable sources
- FURMAN balanced power isolation system and voltage regulators
- 796-Point 1/4" Mil-Spec TRS patchbay



NEVE MELBOURN CONSOLE

- 12 x 3114 Mic/EQ Modules (1081 Pre's)
- 2 Bus+Aux+Cue+Solo
- Direct Outs, Inserts, etc.

PRO TOOLS HD 3 ACCEL

- Macintosh G5 Dual 2 GHz, 4 GB RAM
- 32 Analog I/O on Digidesign 192 KHz interfaces
- 2+ TB hard disk space with DVD/CD/Tape backups
- SYNC I/O with blackburst generator
- Waves Platinum, Auto Tune and
- Tons of plug-ins and audio software

CUSTOM EAW ACTIVE MAIN MONITORS

- 18" Subwoofer, 2 x 15" woofers, 6" mids, 2" tweeters per side, 6000 watts total!

MYTEK PRIVATE CUE

- Headphone Mixing System- industry standard

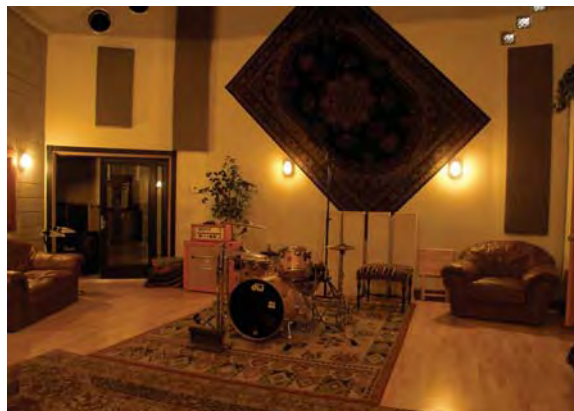
STUDER A827 2" 24-TRACK ANALOG TAPE RECORDER

- The industry standard for world-class sound quality.
- Biased for Quantegy GP-9 and 456 at 30 ips
- Easily recalibrated for other tape formulations as necessary (please specify your needs prior to your session)
- Features LYNX Timeline II synchronizer for SMPTE/Blackburst

CLICK HERE TO SEE OUR LIST OF OUTBOARD GEAR!

complimenting both main studios are Studer and ATR analog tapes machines. For the more modern approach, there is Pro Tools everywhere and HD-3 in all three large studios. **The Saltmine** recently added their fifth room which they call "The Bungalow." The Bungalow is a "live-in" overdub room/patio home. This 1,300 square foot bungalow will house five people comfortably including a master bedroom suite, bunkroom with three beds, kitchen, lounge and two bathrooms along with a great overdub space with Pro Tools and monitors. So, if you have a great idea in the middle of the night, you don't have to wait to next morning record it. The Bungalow also has a private yard if an artist wants to bring their pet. Studio D known as "The Villa" has a similar setup anchored by previous owner David Foster's SSL 4056 G that was installed at **The Saltmine** by the Desk Doctor. This studio is coupled with its own living space, private bedroom, kitchen and rehearsal area complete with JBL PA system, large mirrors and kickback space.

The Saltmine is located in Mesa, an east-side suburb of Phoenix, Arizona and is easily accessible by plane or car. Mesa is roughly 350 miles from Los Angeles, an afternoon drive or a blink-of-an-eye flight. The climate in Mesa averages a gorgeous 72 degrees. Tempe, the home of Arizona State University is only ten minutes away, so if you are itching for music nightlife, you can



Studio A tracking room



Front gate

The Saltmine Studios SSL Mix Room

- SSL 6064 E/G+ 128-input mixing console with total recall
- Custom Active Westlake BBSM-15 Main monitors mounted on 2000-pound Sand pillars
- Top end powered by Bryston 4b amp
- Bottoms powered by Bryston 14b Dual Monoblock power amplifier
- Dual 18" Subs powered by Crown 3600 amplifiers
- Bryston Active Crossovers
- Pro Tools HD3 Accel on a Dual 2 GHz G5 Power Macintosh with 4 GB RAM
- Apogee Big Ben System Master Clock
- Digidesign SYNC I/O for SMPTE and MTC Sync + Midi interface
- 3 Digidesign 192 interfaces with D/A expander cards, 1 Apogee DA16x, 1 Apogee Rosetta 200 for 26 in, 66 out
- Waves Diamond bundle, Melodyne, Auto Tune, Vocalign, Pitch 'n Time etc.
- George Massenburg's GML 8200 Parametric EQ, SRS UW-02 Stereo Image Processor
- 2 Neve 1064 Mic Pre/EQ's, 2 API 500 Series Lunchboxes, 4 Vintage Pultecs, 6 Distressors etc.
- Lexicon 480L Dual Engine Reverb Processor, AMS RMX 16 Reverb, 2 Lexicon PCM-42's etc.

[CLICK HERE TO SEE OUR LIST OF OUTBOARD GEAR!](http://www.thesaltmine.com)

<http://www.thesaltmine.com>

check out local talent or catch a concert. There are lakes, golf courses, 5-star hotels and great restaurants near by, also natural untouched deserts and wildlife parks perfect for photo-ops.

"This secure 16,000 square foot compound is private, walled and gated, and can serve as a live outdoor music venue which can entertain up to five hundred guests. You could also just chill out on the misted patio and BBQ while enjoying the serenity of three Mexican fountains. You'll never have to leave if you don't want to," says owner/producer and manager Don M. Salter. "The studios were an evolution of sorts. It starts with one step that leads to the next, and you end up at the gates of The Emerald City! It happened that way with us. We did it one room and one expansion at a time. It was very logical really."

In 2003, Don felt inspired to expand his business beyond an industrial park bay and moved **The Saltmine** to its current location at 48 S. Macdonald St. in the Downtown Arts District in Mesa, less than a block from the \$100-Million Mesa Center for the Arts and the Mesa Amphitheater concert venue. "I found this great space, an open air triage of buildings with one-foot thick masonry walls. It was built in 1914 and originally housed The Mesa Tribune newspaper business. The original building burned down then was rebuilt in 1956 and became a church. It availed itself to be a church the way the main

building and the two outside buildings were all connected. It had a church-like atmosphere of peace, security and privacy. When we turned it into a world-class recording facility in 2003, it became a creative palace compared to its former existence. The facility was fully modernized; new plumbing, all new electrical, as well as all studio rooms being built to be world class specs and shapes, from cut concrete floors to 14' sand-filled masonry walls."

When you visit **The Saltmine** you can feel the love and care put into its conception. Salter mortgaged his home to make sure the renovations and its completion were exactly how he saw it in his mind's eye. **The Saltmine** has been home for many celebrity clients and caters to Hip Hop and Rock acts, but with the five amazing studio environments there is something for everyone. Some of the acts who have immersed themselves within its walls are Lil Wayne, Alicia Keys, Eve, Ministry, Bone Thugs-N- Harmony, Jimmy Eat World, Sevendust, DMX, Megadeth, Soulfly, Tegan and Sara, Trisha Yearwood, Wyclef Jean, producers Rick Rubin and Timbaland, Che Vicious among many others, most notably Swizz Beatz. **The Saltmine** has an unbelievable wealth of gear and instruments to use as well. On their website www.thesaltmine.com visit the section called "The Vaults" for a list of available microphones, outboard gear, guitars and drums, effects

pedals, keyboards and modules as well as guitar amplifiers.

At **The Saltmine**, you are provided with house engineers and producers or you can bring your own. The studio has four full-time team engineers including Don Salter (the owner), John Gray (DMX, Soulfly, Meat Puppets, Ministry) who is chief mastering engineer and producer. Engineers Jason Levine (Che Vicious, DMX, G-Unit) and Justin Salter (Jonas Bros, Lil' Wayne, Young MC), who is Don Salter's son, are skilled as senior engineers and producers. Justin assisted producer John Fields on recording seven songs on the platinum-plus selling Jonas Brothers record "A Little Bit Longer."

The Saltmine welcomes all producers and engineers who come through their doors and are very supportive of outside production talent. **The Saltmine** staff will make the artist feel welcome and get the sound they desire. This full-service facility is ideal for tracking, mixing and mastering. "We do everything here. We are Arizona's recording one-stop, we do everything from start to finish, so a local artist can walk in with an idea and walk out with a duplication master," says Don. On rates for the studios, "We have book rates, and local rates. We won't let rates stand in the way of killer music being produced here. We do what we need to do to make people happy and work within any reasonable budget."